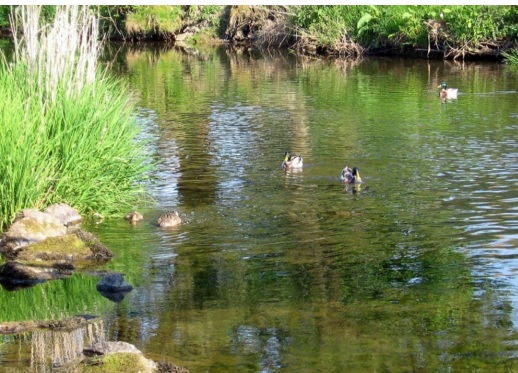


CALL LLOYDS CARAVAN & LODGE SALES TO ARRANGE AN APPOINTMENT TO VIEW THIS PARK ON 01745 832 050



Park Description

Parc Farm Caravan Park is located in the heart of Wales surrounded by beautiful Countryside next to the River Tanat in the village of Penybontfawr. Parc Farm Caravan Park is ideal if you are looking for a quiet rural holiday but with activities and attractions at your fingertips.

A well-maintained family run park which attracts those looking for outdoor pursuits and family activities such as kayaking, sailing, windsurfing, boating, horse riding, abseiling, archery and game shooting at Lake Vyrnwy. There is also a huge mountain Bike Park nearby which attracts people from all over the UK.

Facilities at the park include launderette and WIFI, there is also the play area and a small football pitch over the river... a splendid spot for a gentle kick about well away from the accommodation area, which means that if you're indulging in a spot of R&R, you're really not very likely to be disturbed by flying footballs.

Type of park

Facilities / Locally

Pets Allowed In the Countryside Family Friendly	Quiet Close to Amenities	Play Area Dog Walks Other Football pitch over the river	WIFI Launderette Fishing Allowed
--	------------------------------------	--	---

Park Information

Contact Name: Nick Walsh Phone Number 01938 500406 Season Length: 7.5 months Times: March 15th - October 31st	Park Email enquiries@parcfarm-minafon.co.uk Siting and Connecting Gas Electric: Included Water Included
---	---

CALL LLOYDS CARAVAN & LODGE SALES TO ARRANGE AN APPOINTMENT TO VIEW THIS
PARK ON 01745 832 050

